

4

3

2

CAGEC 1K3H5 DWG NO 700170

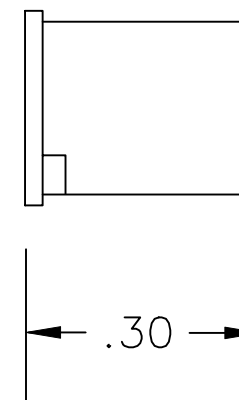
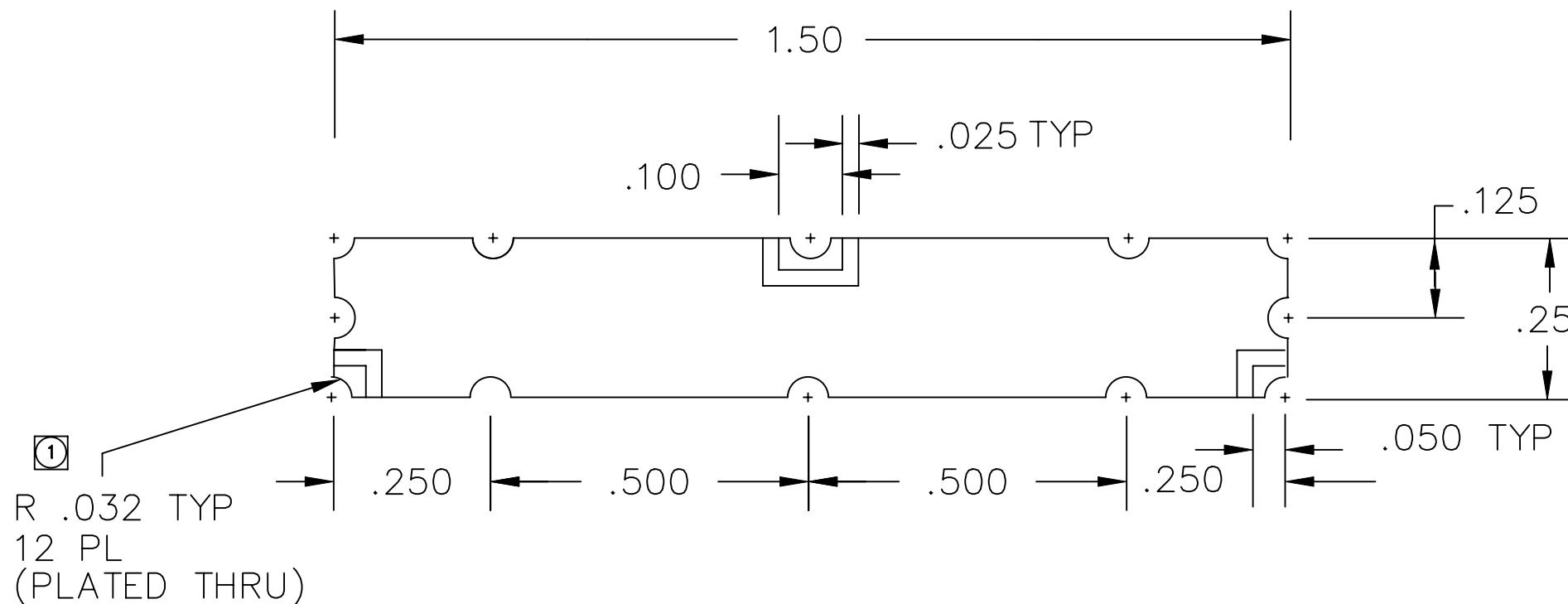
SH REV -

1

| REVISIONS | | | |
|-----------|-------------|------|----------|
| REV | DESCRIPTION | DATE | APPROVED |
| | | | |
| | | | |
| | | | |
| | | | |

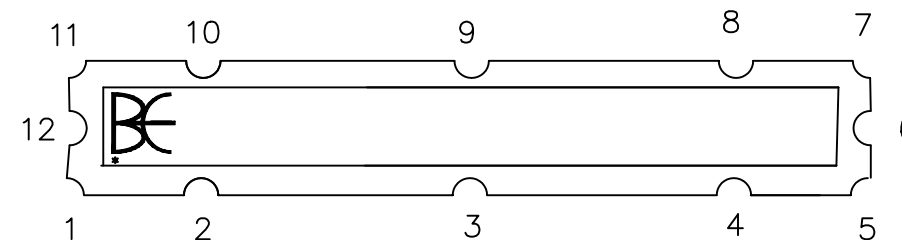
B

B



A

A



CONTACT I/O (TOP VIEW)

2 Input pin 9, Output 1 is pin 1, Output 2 is pin 5

1 Location of plated thru holes are to be held at +/- .005.

THE INFORMATION CONTAINED IN THIS DRAWING IS THE SOLE PROPERTY OF BREE ENGINEERING. ANY REPRODUCTION IN PART OR WHOLE WITHOUT THE WRITTEN PERMISSION OF BREE ENGINEERING IS PROHIBITED.

| | | | | |
|--|--|--------------|------------------|---------------|
| UNLESS OTHERWISE SPECIFIED DIMENSIONS ARE IN INCHES & TOLERANCES ARE: .XXX .XX ANGLES ±.005 ±.01 | CAD GENERATED DRAWING DO NOT MANUALLY UPDATE | | BREE ENGINEERING | |
| | DWN LN | DATE 2/16/09 | OUTLINE | |
| MATERIAL PCB-FR4 / NICKEL | CHK | RESP ENG | | |
| MATERIAL N/A | MFG ENG | QUAL ENG | | |
| Scale for REFERENCE ONLY | | SIZE B | CAGE CODE 1K3H5 | DWG NO 700170 |
| | | SCALE 4:1 | | REV - |
| | | SHEET 1 OF 1 | | |

4

3

2

1